



INDIANA  
DEPARTMENT OF  
CHILD  
SERVICES

# Children's Mental Health Initiative

**John Pavlack, Division of Mental Health and Addictions**

**Katie Connel, Department of Child Services**



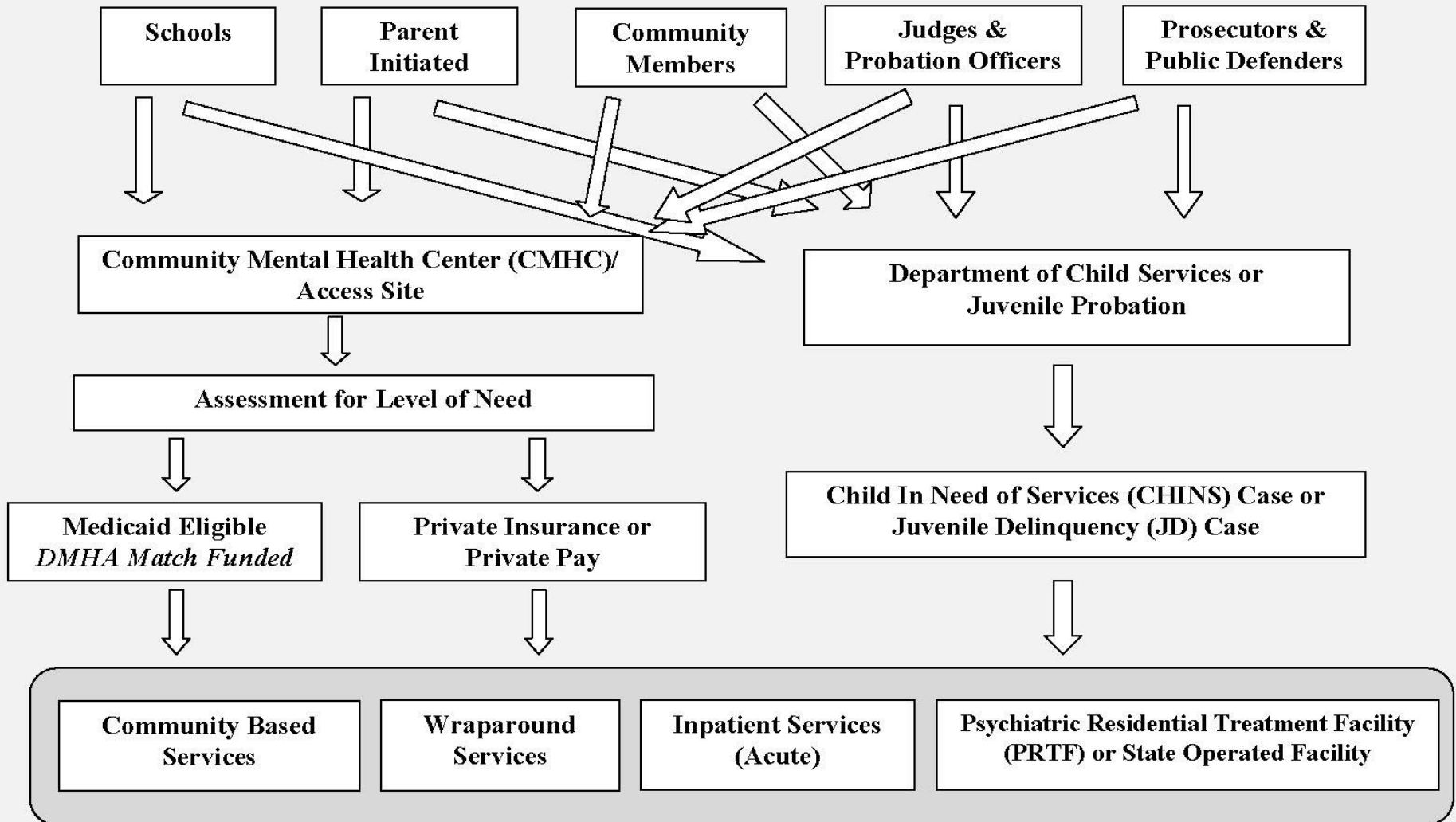
# The Problem...

- **Some children struggle with significant mental health issues.**
- **Their families have difficulty accessing services (generally due to inability to pay).**

# The Problem...

- **Some families get bounced from agency to agency trying to access services.**
- **Other families end up in the child welfare system (through a CHINS 6) as a way to access services- parents have not abused or neglected their child.**

# Current Process: Access to Children's Mental Health Services





INDIANA  
DEPARTMENT OF  
CHILD  
SERVICES

# There must be a better way...

- **DCS and FSSA began meeting to brainstorm solutions.**
- **All agree that a child should not have to be a CHINS for the sole purpose of accessing services.**
- **Consider what is best for families.**

**If this were your family, what would you want?**

# There must be a better way...

- **Need to remove silos!**
- **Needs to be simple!**
- **Needs to be a multiagency solution.**

# Review of what already exists...

- **PRTF Transition Waiver (CA-PRTF)**
- **Application for State Plan Amendment for 1915i for children**
- **Access Sites—many counties already have this structure with Systems of Care**
- **MRO/Clinic Services**
- **PRTF**
- **DCS master contracts with CMHCs**

# The Proposed Solution to Assist Families in Crisis...

- **DCS provides funding for those families in crisis who cannot afford to access these services.**
- **DMHA will collaborate to assist with building statewide Access Sites and assist DCS with service monitoring.**
- **State Agency Committee with representatives from DCS and FSSA to follow the process and brainstorm solutions when obstacles arise.**





INDIANA  
DEPARTMENT OF  
CHILD  
SERVICES

# Access to Mental Health Services...

- **Families will be sent to the Access Site for an assessment to determine eligibility for services**
- **Those who meet eligibility criteria for services but are not eligible for Medicaid, will access services through DCS contract.**



# Who can refer a child to Community Mental Health Access Site?

•Community Members

•Service Providers

•Schools

Prosecutors

Anyone

Anyone

Public Defenders

Judges

•DCS

Anyone

Health Care Providers

•Parent(s)

# What happens when the family won't engage in services...

- **Does the family need services in order to maintain the safety of the child or other children?**
- **Is the family unwilling to accept offered services?**
- **Does the family insist the child needs to be removed when the assessment indicates the child can be maintained at home with services?**

**If yes...**

# What happens when the family won't engage in services...

**If yes...**

**DCS will complete an assessment to determine if there should be an open DCS case to obtain the intervention of the court to require the family to engage in services.**

# Who will be Eligible

## Target Group Eligibility

- **Child or adolescent age 6 through the age of 17**
- **Youth who is experiencing significant emotional and/or functional impairments that impact their level of functioning at home or in the community (e.g., Seriously Emotionally Disturbed classification)**
- **Not eligible for BDDS services**
- **Not eligible for Medicaid**

**AND...**



# On the mental health side...

## Needs-Based Criteria

**DSM-IV-TR Diagnosis-** Youth meets criteria for two (2) or more diagnoses.

### **CANS 4, 5, or 6**

**Dysfunctional Behavior-** Youth is demonstrating patterns of behavior that place him/her at risk of institutional placement— & unresponsive to traditional outpatient and/or community-based therapy.

### **Specifically:**

**Maladjustment to trauma    Psychosis    Debilitating anxiety**  
**Conduct problems    Sexual aggression    Fire-setting**

**Family Functioning and Support-** Family/caregiver demonstrates significant need in one or more of the following areas:

**Mental health**  
**Family stress**

**Supervision issues**  
**Substance abuse**



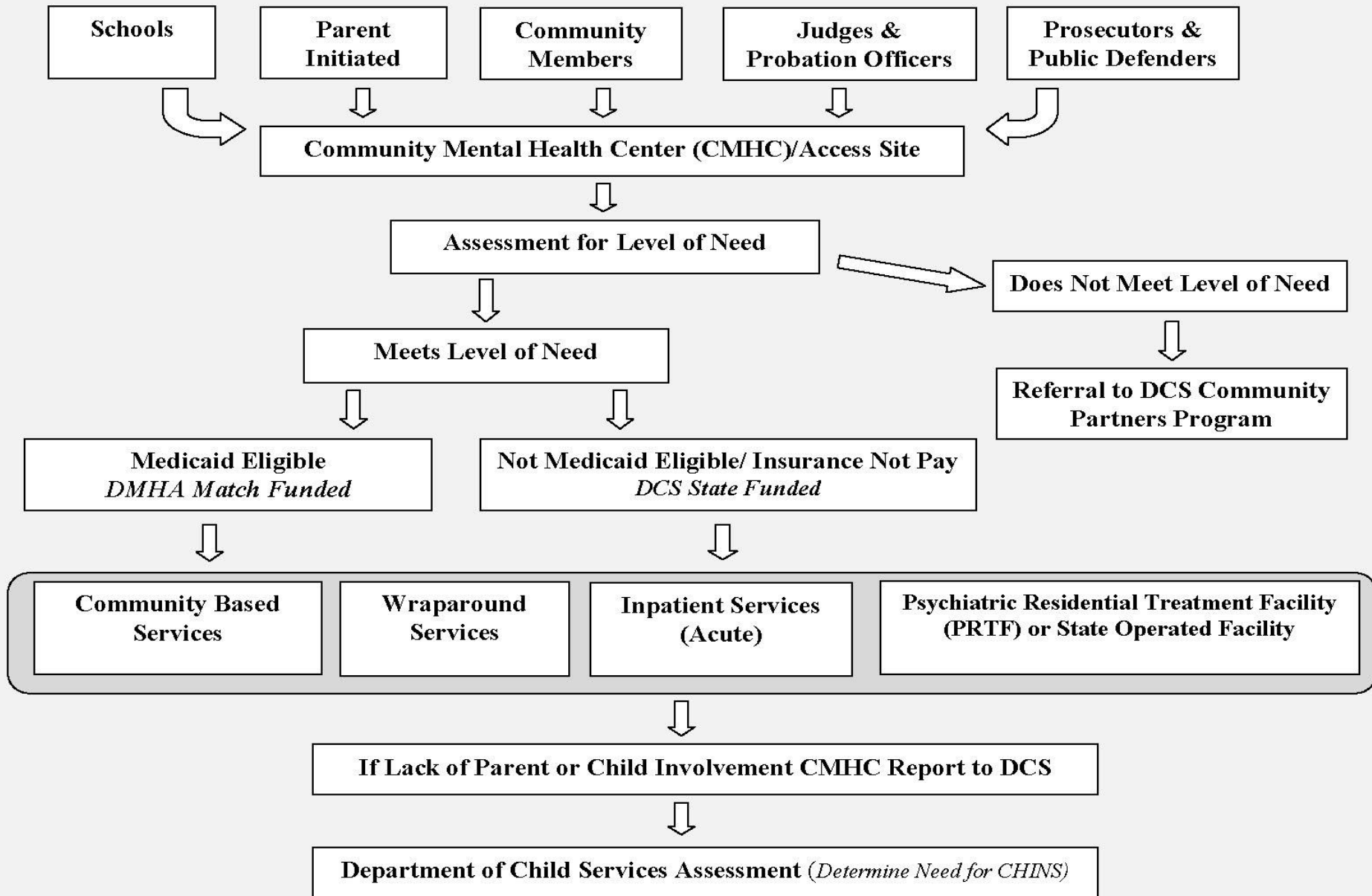
# Probation Youth

**If the JD/JS case is opened, the child should be served through available services under the JD/JS case (not the Children's Mental Health Wraparound Services Project).**

**An assessment for the Children's Mental Health Wraparound Services Project may be completed while there is an open JD/JS case.**

**When the condition of delinquency has been alleviated and the JD/JS case closes, the child may participate in the Children's Mental Health Wraparound Services Project.**

# Proposed Process: Access to Children's Mental Health Services





# Services Available

- Medicaid Rehabilitation Option Services
- Clinic Based Services
- Services to mirror the Children's Mental Health Wraparound (1915i)
  - Wraparound Facilitation
  - Habilitation
  - Family Support and Training
  - Respite (overnight respite must be provided by a DCS licensed provider)



INDIANA  
DEPARTMENT OF  
CHILD  
SERVICES

# Family Evaluations



INDIANA  
DEPARTMENT OF  
CHILD  
SERVICES

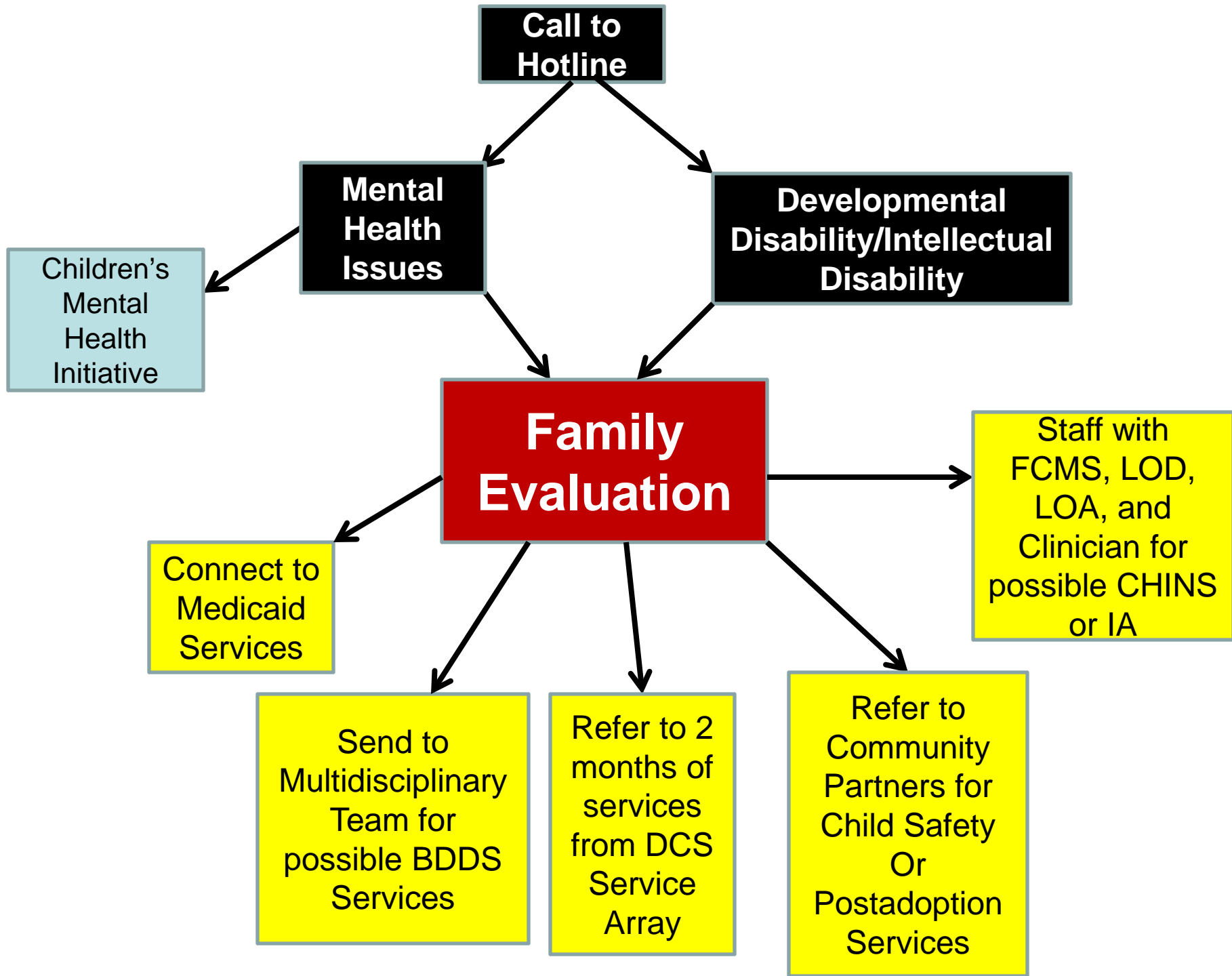
# Family Evaluations

## The Philosophy...

- **DCS will serve these families by providing a Family Evaluation by specially trained Family Case Managers**
- **DCS will provide service access to these families when the child is determined to be a danger to him/herself or others and the family does not have the ability or resources to access the services needed.**

# What is a Family Evaluation...

- Conducted to determine if services are needed in order to maintain the safety of the child or family members.
  - Looking specifically to determine what might need to be offered to maintain the child safely in his/her home.
  - When that is not possible, review if placement is an option. The FCM role is to connect the family to the necessary resources.
- Similar to an assessment, however, there are no allegations of abuse or neglect and no alleged perpetrators.
- In a Family Evaluation, the FCM will complete the Family Evaluation form.
- This is NOT an assessment for abuse or neglect.



**Call to Hotline**

**Mental Health Issues**

**Developmental Disability/Intellectual Disability**

Children's Mental Health Initiative

**Family Evaluation**

Connect to Medicaid Services

Staff with FCMS, LOD, LOA, and Clinician for possible CHINS or IA

Send to Multidisciplinary Team for possible BDDS Services

Refer to 2 months of services from DCS Service Array

Refer to Community Partners for Child Safety Or Postadoption Services